

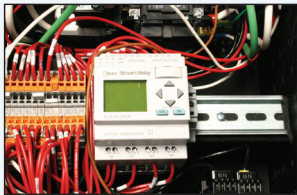


# 5700 / 5800 Series

North America's #1 Manufacturer of High-Quality Cleaning Equipment

Hot-Water Pressure Washers

For Wash Bay Installations



**Programmable Smart Control Automation** provides complete control over the machine's run time, auto start/stop and time delay shut down functionality.

**Upright, vertical coil** delivers high efficiency and maintains constant temperature using oil, natural gas or liquid propane

**Adjustable upstream detergent injection** ensures high-pressure sudsing for better cleaning

**Elevated gas valve** protects valve from water damage, and is located at the back corner for easy installation and service

**Burner assembly** pivots down to allow access to burner ring and pilot assembly for maintenance

**Insulated Hotsy trigger gun** and **insulated wand** with ergonomic, adjustable side handle

**Stainless steel coil skin** provides extra durability to withstand overspray

**Controls** for the pump, burner and detergent are easily accessible.

Removeable **control panel** provides access to **adjustable temperature control** and Smart Relay for secured control of desired operating positions.

**Remote** ready for operation in wash bays.

**Relief valve** protects the machine and user from thermal expansion

**Sleek side and front panels** are easily removed for maintenance and service access

**Quick disconnect stainless steel nozzles** are color coded for quick changing between 0°, 15°, 40° spray nozzles

**50-ft. length of high-pressure hose** for easy maneuverability around a large working area

**20 HP Baldor 208V, 230V, 460V or 575V, 3PH electric motor** is OPD (open drip-proof) and comes with thermal overload protection and manual reset



## FEATURES

- Oil, Natural Gas Fired or optional LP Fired
- High Flow Rate 8.0 or 9.5 GPM @ 3000 or 2500 PSI
- Electric Motor
- Belt Drive Pump



Heater coil carries a 5-year warranty



Hotsy-designed Triplex pumps carry a 7-year limited warranty

[www.Hotsy.com](http://www.Hotsy.com)

Nothing Cleans Like a Hotsy!

# 5700 / 5800 SERIES Hot Water Pressure Washers

■ Oil or Natural Gas-Fired

■ 7.8 or 9.5 GPM / 2500 to 3000 PSI

■ 1725 Motor RPM

■ ETL-Certified

## Ten models, designed for industrial cleaning.

SPECIFICATIONS										BELT DRIVE	
MODEL	GPM	PSI	HP	VOLTS/PH	AMP	FUEL	BTU/HR	PUMP MODEL	PORTABILITY	HOSE	SHIP WT (lbs)
<b>5730SS</b>	8.0	3000	20	230/3	44	Oil	768,000	HX9536L.2	N/A	50'	1,471
<b>5732SS-208</b>	8.0	3000	20	208/3	55	NG	720,450	HX9536L.2	N/A	50'	1,471
<b>5732SS</b>	8.0	3000	20	230/3	42	NG	720,450	HX9536L.2	N/A	50'	1,471
<b>5733SS</b>	8.0	3000	20	460/3	23	Oil	768,000	HX9536L.2	N/A	50'	1,471
<b>5735SS</b>	8.0	3000	20	460/3	21	NG	720,450	HX9536L.2	N/A	50'	1,471
<b>5736SS</b>	8.0	3000	20	575/3	16	NG	720,450	HX9536L.2	N/A	50'	1,471
<b>5832SS</b>	9.5	2500	20	230/3	42	NG	939,890	HX1036L.2	N/A	50'	1,471
<b>5832SS-208</b>	9.5	2500	20	208/3	48	NG	939,890	HX1036L.2	N/A	50'	1,471
<b>5835SS</b>	9.5	2500	20	460/3	21	NG	939,890	HX1036L.2	N/A	50'	1,461
<b>5836SS</b>	9.5	2500	20	575/3	16	NG	939,890	HX1036L.2	N/A	50'	1,471

SS = Stainless Steel

Dimensions: 51"L x 31"W x 63.4"H

### 5700/5800 Series Features:



**Large frame Hotsy belt-drive pump** features NESTechnology with U-Seals for 3 times longer pump life.

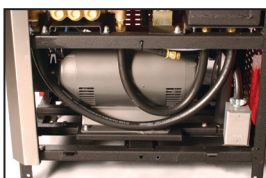
The removeable front and side panels are a real plus for routine preventative maintenance, such as easily changing the pump oil.

**Vertical banded belt** provides extended life and reduced maintenance costs by eliminating multiple belts that stretch at different rates. New belt tensioner provides constant tension and makes servicing and maintenance of the belt a breeze.

**Large 10-gallon polyethylene float tank** with cool-down pump by-pass loop to significantly reduce potential pump damage from the operator regularly running the machine in by-pass mode.



Motor is mounted to slide out rails for easy removal

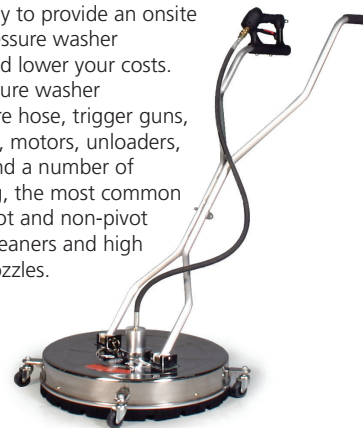


#### OPTIONS FOR 5700/5800

- Detergent container bracket
- Remote Station
- 12" NG or LP draft diverter
- LP option
- Soap Solenoid and Switch

#### PARTS & ACCESSORIES

Your local Hotsy dealer would be happy to provide an onsite demonstration to determine which pressure washer accessories will help speed cleaning and lower your costs. Hotsy dealers stock thousands of pressure washer replacement parts such as high pressure hose, trigger guns, high pressure nozzles, pumps, engines, motors, unloaders, filters and wands. In addition, you'll find a number of accessories designed to speed cleaning, the most common accessories are telescoping wands, pivot and non-pivot hose reels, flat surface cleaners and high pressure turbo nozzles.



Distributed by:

**Hotsy** *Nothing Cleans Like a Hotsy!*

Tel: (800) 525-1976 Fax: (888) 880-9631  
www.Hotsy.com email: info@Hotsy.com  
P/N 8.914-183.0 / HOT\_5700 Effective 10/17



Specifications & product descriptions subject to change without notice.  
Hotsy's manufacturing facilities have established and apply a quality and environmental management system to be ISO 9001:2008 and ISO 14001:2001 certified.  
A member of KÄRCHER North America ©2017 Hotsy

NOTE: We are constantly improving and updating our products. Consequently, pictures, features & specifications in this brochure may differ slightly from current models. Flow rates & pressure ratings may vary due to variances allowed by manufacturers of our machine components. We meet the CETA testing specs for machine performance at ±10% and in some cases are tighter within ±5% of listed specifications.