

700 SERIES

Featuring 797SS and 897SS

hotsy®

PRESSURE WASHERS / SINCE 1970

FEATURES

3 to 3.5 GPM
@ 2000 to
3000 PSI
Oil Fired

BL Ergonomic handle designed for ease of use and maneuverability

BL Robust HM Series Hotsy Pump

BL Beckett Burner – industry preferred

BL Bumper for fuel tank protection

BL Auto Start/Stop is standard and extends machine life

BL Easy-to-use, water-tight control panel includes individual pump/burner rocker switches and thermostat controls

BL WEG 1725 RPM – slow speed motors last longer and come with a no-questions-asked warranty

HOT WATER

ELECTRIC

BELT DRIVE

Hour Meter – aids in tracking service intervals

Heater Coil with Schedule 80 steel pipe comes with a non-prorated 5-year warranty

Flat-free tires – never need maintenance

3 nozzles with quick coupling

Stainless-steel coil skin provides extra durability to withstand the elements

Rust-proof, removable, non-contaminating polyethylene fuel tank includes fuel gauge cap

Upright, oil-fired burner delivers high efficiency and maintains constant temperature using diesel fuel, kerosene or home-heating oil

36-ft. power cord with safety Ground Fault Circuit Interrupter (GFCI breaker)

Upstream detergent injection ensures high-pressure sudsing for faster, more efficient cleaning

BL = Black Label Edition feature

OPTIONS FOR 700 SERIES

360° Pivot Reel, 100'

360° Pivot Reel, 200'



FORGED IN FIRE & FULLY LOADED

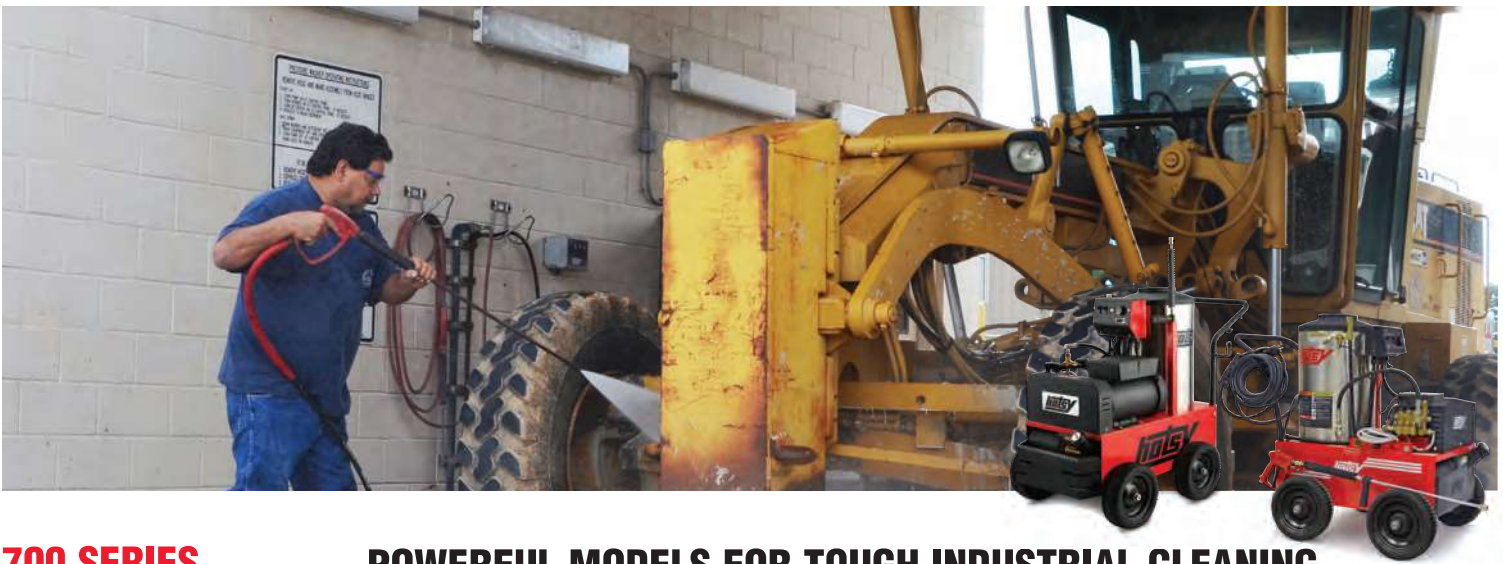
HOTSY 797SS & 897SS HOT WATER PRESSURE WASHERS

Black Label Edition

At Hotsy perfection isn't an end-point, it is something we strive for daily. We are always thinking of ways to improve our pressure washers. The Black Label editions 797SS and 897SS are a prime example. We loaded them with features to move them to the top of the line. They boast Auto Start/Stop, a robust HM Series pump, Beckett Burner, WEG slow speed motor and an hour meter. On top of that we've given the machine a distinctly classy look with black logos, essentially **we're giving you bad ass fully loaded!**

BLACK LABEL
EDITION





700 SERIES

Hot-Water **ELECTRIC** Belt Drive Models

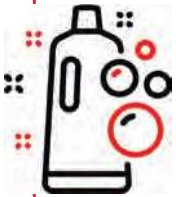
POWERFUL MODELS FOR TOUGH INDUSTRIAL CLEANING.

■ Electric-Powered ■ 3.0 to 3.5 GPM @ 2000 to 3000 PSI ■ Electric Start

MODEL	PART NO.	GPM	PSI	HP	VOLT/ PH	AMPS	FUEL	BTU/HR	PUMP MODEL	DRIVE	PORTABILITY	DIMENSIONS (LXWXH)	SHIP WT (LBS)
790SS	1.109-612.0	3.0	2000	4	230/1	20	Oil	289,900	HB4025R	Belt	Std	37"x28"x45.5"	450
795SS	1.109-039.0	3.5	2000	5	230/1	24	Oil	289,900	HB4025R	Belt	Std	37"x28"x45.5"	455
795SS-208	1.109-040.0	3.5	2000	5	208/1	27	Oil	289,900	HB4025R	Belt	Std	37"x28"x45.5"	500
797SS	1.109-180.0	3.5	2000	5	230/1	24	Oil	289,900	HM3540R.3	Belt	Std	46"x298"x42.5"	510
797SS-208	1.109-181.0	3.5	2000	5	208/1	27	Oil	289,900	HM3540R.3	Belt	Std	46"x29"x42.5"	513
895SS	1.109-077.0	3.5	3000	8.2	230/1	36	Oil	289,900	HM3540R.3	Belt	Std	37"x28"x45.5"	480
897SS	1.109-182.0	3.2	3000	6.2	230/1	28	Oil	255,000	HM3540R.3	Belt	Std	37"x28"x45.5"	517
897SS-208	1.109-183.0	3.2	3000	6.2	208/1	29	Oil	255,000	HM3540R.3	Belt	Std	50"x29"x42.5"	520

SS = Stainless Steel

DETERGENTS



To clean like a pro, you need to include detergents. Hotsy offers a full line of detergents for cleaning grease, dirt, road grime, aluminum, sanitation and so much more. Our detergents help you clean faster and save money.

PARTS & ACCESSORIES



Clean faster and more efficiently with pressure washer accessories like flat surface cleaners and turbo nozzles.

SERVICE



Hotsy factory-trained technicians keep your equipment running with on-site or in shop maintenance and tune-ups. Plus, we repair all brands.

hotsy

The Pressure Washer The Pros Use.
EST. 1970

HOTSY.COM

Tel: 800.525.1976

Fax: 888.880.9631

Email: info@hotsy.com

Distributed by:

HOTSY CLEANING SYSTEMS

1-800-000-0000

1970 First Street, City ST 00000
www.Hotsy.com

NOTE: We are constantly improving and updating our products. Consequently, pictures, features & specifications in this brochure may differ slightly from current models. Flow rates & pressure ratings may vary due to variances allowed by manufacturers of our machine components. We meet the CETA testing specs for machine performance at +_10% and in some cases are tighter within +_ 5% of listed specifications.

Specifications & product descriptions subject to change without notice. Hotsy's manufacturing facilities have established and apply a quality and environmental management system to be ISO 9001:2008 and ISO 14001:2001 certified.

VISIT US ONLINE

[Facebook/Instagram](#) [HotsyCleaningSystems](#)

[LinkedIn](#) [Hotsy-Corp](#)

[Twitter](#) [TheHotsyMan](#)

[YouTube](#) [HotsyCleaningSystems](#)

Get Hotsy Email Bit.ly/GetHotsy

© 2022 Kärcher North America

P/N HOT_700 Effective 07/22